

**LEGEND**

- - - HEAVY VEHICLE ROUTE
- CITY LIMITS
- RAILWAY
- PARSONS INDUSTRIAL PARK

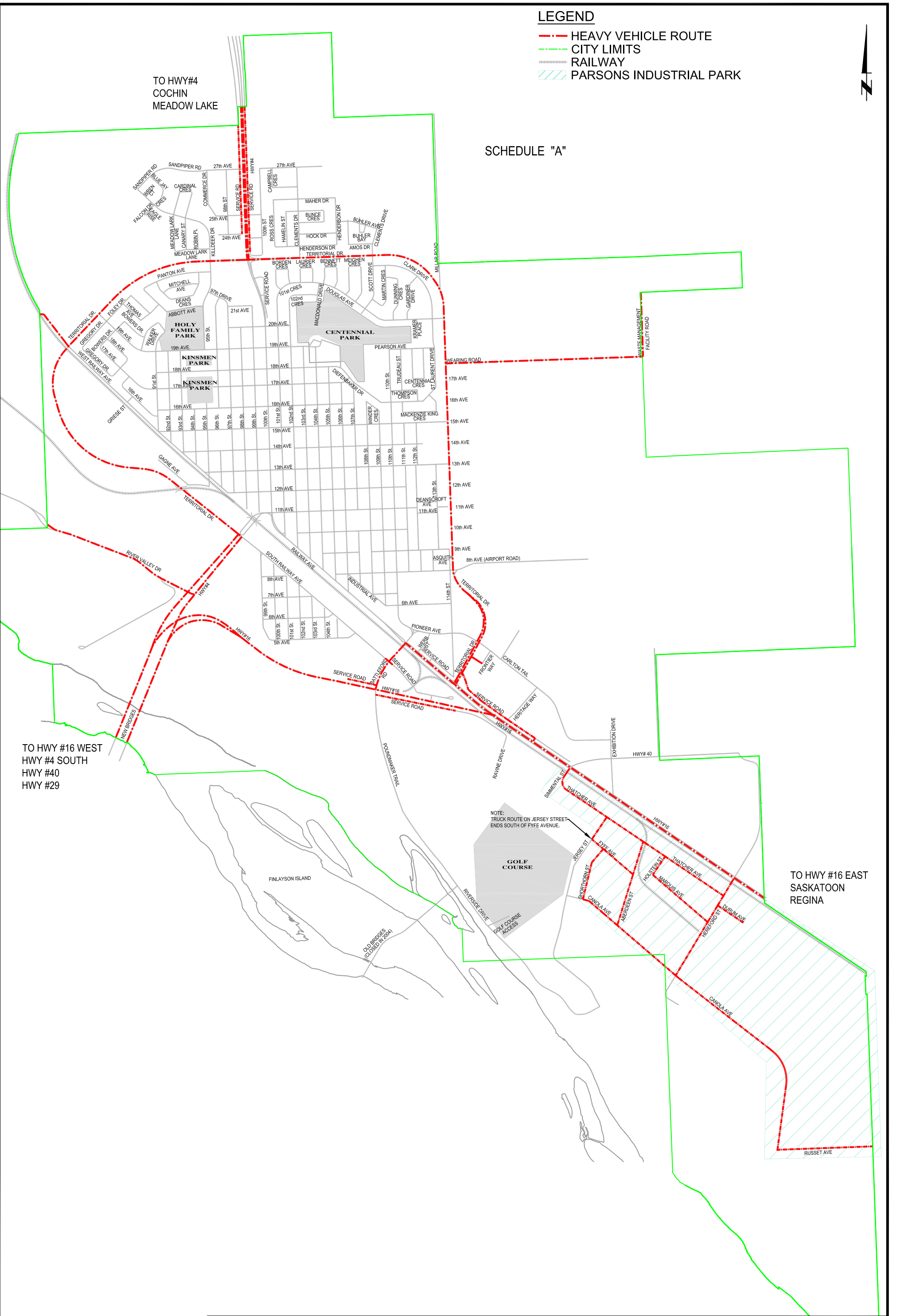


TO HWY#4  
COCHIN  
MEADOW LAKE

**SCHEDULE "A"**

TO HWY #16 WEST  
HWY #4 SOUTH  
HWY #40  
HWY #29

TO HWY #16 EAST  
SASKATOON  
REGINA



NOTE: TRUCK ROUTE ON JERSEY STREET ENDS SOUTH OF FYFE AVENUE.

	DATE REVISED	BY	DESIGNED BY:	DATE:	SCALE:	PAGE:
	MAY 1, 2013 A.J.F. (ADDED INDUSTRIAL PARK)		JDH	OCT 2, 2009	NTS	1 / 1
	AUGUST 26, 2013 A.J.F. (ADDED SERVICE ROADS, WEARING ROAD, AND VEHICLE TRAINING ROUTE)		CHECKED BY:	PROJECT:		
SEPTEMBER 19, 2013 A.J.F. (REMOVED VEHICLE TRAINING ROUTE)		JOB NO.:	CITY OF NORTH BATTLEFORD HEAVY VEHICLE ROUTE			