

For Sale

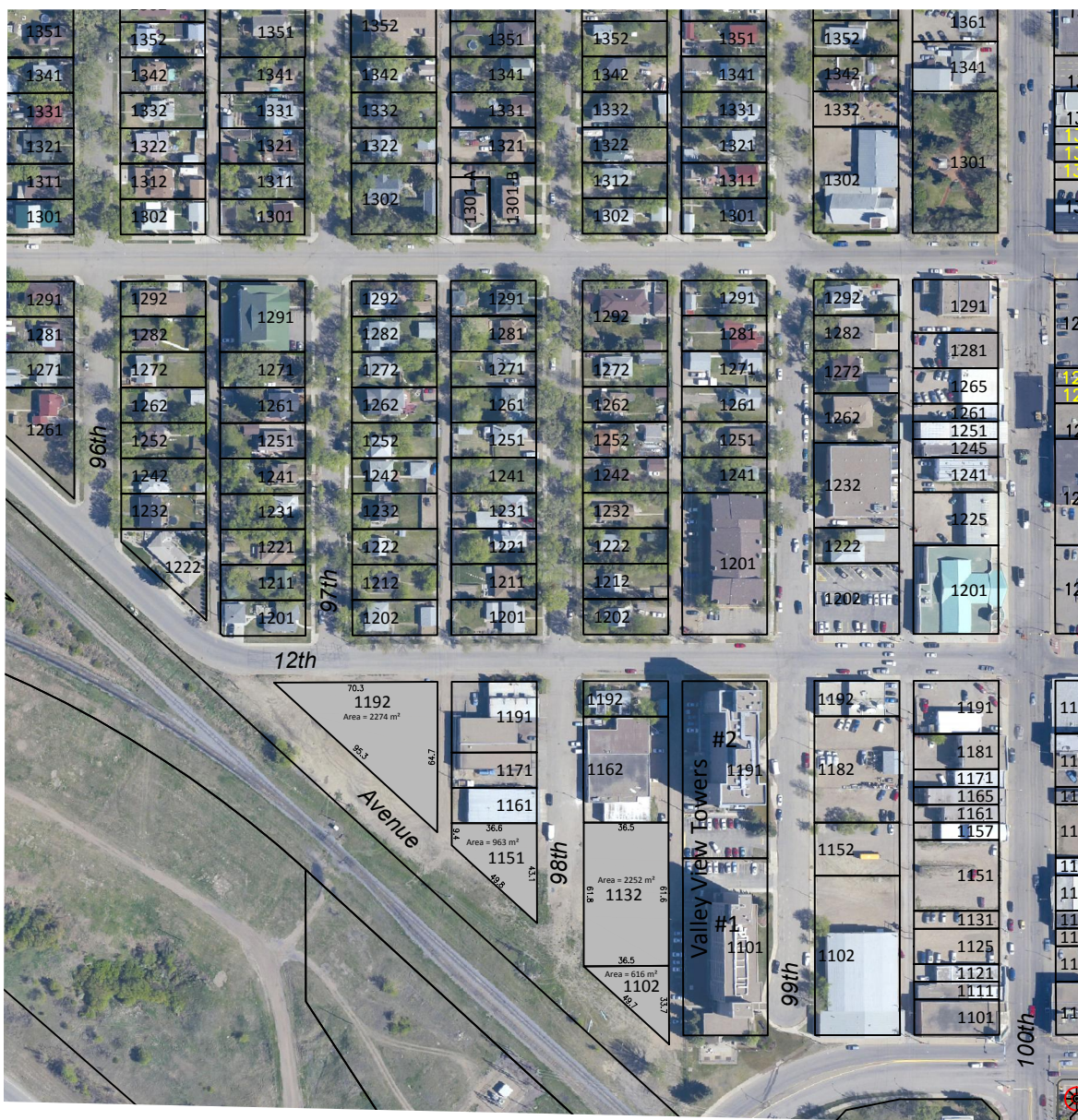
Optioned

Sold

Park

School

Future



Note: All measurements are approximate and should be verified through survey



- CITY PLANNER
306 445 1732
- BUILDING INSPECTOR
306 445 1733
- BUSINESS DEVELOPMENT
306 445 1718

Downtown Land Inventory



- DRAWN BY:
COR
- DATE:
15 June 2010
- PAGE:
1 of 1